

# CSI 1000

THORN

Compact high intensity floodlight for PAR64 sealed beam lamps

(ETL listed and certified for UL 1598 and CSA C22.2 No. 250.0 standards)



- Primarily designed for high tower installations where powerful illumination with excellent color rendering is required, as in sports stadia
- Also suitable for feature lighting where a narrow, high-intensity beam is required
- Sealed beam lamp keeps integral reflector clean
- Choice of 5 front glasses to vary beam distribution
- Lamp replacement possible without disturbing aiming angle
- Colored dichroic lenses and holder available to special order
- Remote ballast assembly

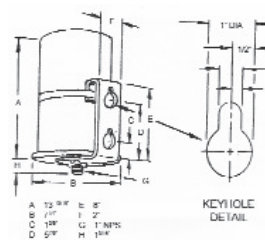
### Materials/Finish

Body: two-part LM6 copper free aluminum casting  
 Body housing toggles: stainless steel  
 Retaining ring gasket: silicone  
 Front glass retaining ring: aluminum  
 Front lenses: glass

### Installation/Mounting

Choice of single yoke or four-way bracket. Yoke fixes via central .86" Ø hole. Two additional .43" Ø holes at 4.01" centers. Cable entry gland. Wiring box fixed to rear of body, contains ignitor (three-wire version).

Note: This includes a spark gap canister which should be changed when replacing a failed lamp. Aluminum body has removable lamp housing assembly, secured by three toggles.



### Specification

To specify state:  
 Enclosed floodlight with LM6 copper free aluminum body for HIR sealed beam compact source iodide lamp, with ignitor in wiring box and remote ballast assembly.  
 As Thorn CSI 1000.

### Certification

Luminaire shall be certified for Indoor/Outdoor use, wet location, to meet UL 1598 standards and CSA Std. C22.2 NO.250.

**Ballast Mounting**  
**Weatherproof ballasts must be mounted vertically with the nipple facing downwards.**

*A horizontal spacing of 6" and a vertical spacing of 12" must be maintained between the ballasts to prevent overheating.*



United Center, Chicago



Morongo Casino, Cabazon, CA

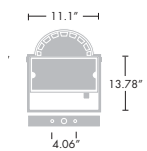
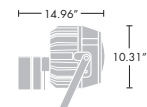
Lighting Design: Visual Terrain Photography: Tom Paiva



Visor



Front glasses, clockwise from top left:  
Prismatic/wide, clear, extra wide and stippled



Windage: 0.05m<sup>2</sup>

New Description		Socket	Weight (lb)	SAP Code
<b>Floodlight</b>				
CSI 1000 1KW 1000W MH	FLOODLIGHT WITH 3 -WIRE IGNITOR	G38	23.37	96002077
<b>Front glasses</b>				
CSI (OMC)	CLEAR GLASS - SYMMETRIC BEAM		1.1	96002556
CSI (OMS)	STIPPLED GLASS - SYMMETRIC BEAM		1.1	96002557
CSI (OMP)	PRISMATIC GLASS - DI-SYMMETRIC BEAM		1.1	96005275
CSI (OMW)	WIDE GLASS - DI-SYMMETRIC BEAM		1.1	96002144
CSI (OME)	EXTRA WIDE GLASS - DI-SYMMETRIC BEAM		1.1	96002145
<b>Accessories</b>				
CSI SPARE YOKE (OQA)	YOKE FOR SINGLE FLOODLIGHT		4.4	96004207
CSI OGB4 4WAY MOUNTG BRKT	FOUR WAY MOUNTING BRACKET		5.07	96007385
CSI HOOD	HOOD		1.1	96006339
CSI VS 20cm	CYLINDRICAL VISOR 20CM LENGTH		1.32	96006331
CSI VS 30cm	CYLINDRICAL VISOR 30CM LENGTH		1.98	96006332
CSI VS 50cm	CYLINDRICAL VISOR 50CM LENGTH		3.08	96006333

Colored lenses and holder to order

